


 **合肥水泥研究设计院**

HEFEI CEMENT RESEARCH & DESIGN INSTITUTE



HCRDI

 **合肥水泥研究设计院**

Hefei Cement Research & Design Institute

地址: 合肥市望江路60号

电话: 0551-63439251 / 63439135

邮编: 230051

传真: 0551-63439135 / 63424995

网址: www.hcrdi.com

邮箱: webmaster@hcrdi.com

ADD: 60 wangjiang Road, Hefei, Anhui, P.R.C.

TEL: +86-551-63439251 / 63439135

P.C.: 230051

FAX: +86-551-63439135 / 63424995

HTTP: www.hcrdi.com

E-mail: webmaster@hcrdi.com

專心做好每一件事

To Do Everything With Full Concentration





HCRDI

目录

Table of Contents

一、基石篇	Foundation Stone	1
院长致辞	Words from the President	2
院况简介	Introduction	3-4
组织结构	Organization Structure	5-6
人员优势	Human Resource Strength	7
荣誉	Awards	7
资质	Certificates	8
二、科研产业篇	Industry On Self-Research	9
粉磨技术与装备	Grinding Technology & Equipment	10-15
热工技术与装备	Burning Technology and Equipment	16-19
环保技术与装备	Environment Protection Technology & Equipment	20-23
电气及自动化、计量技术与装备	Electrical and Automation ,Weighing Technology and Equipment	24-27
通用设备	General Equipment	28-31
新材料技术	New Materials Technology	32
钢结构工程	Steel Structure Engineering	33
资源与环境治理	Resource and Environmental Management	34
产业园简介	Industrial Park of HCRDI	35
研发中心	Research and Development Center	36
三、工程设计篇	Design Engineering	37
设计成果	Design Achievements	38-44
余热发电	Waste Heat Recovery Project	45
技术改造	Technical Conversion	46-47
矿山工程	Quarry Engineering	48
四、工程总承包篇	Turn-key Projects	49
五、国际交流篇	International Communication	61
六、企业文化篇	Corporate Culture	65

基石篇

Foundation Stone

HCRDI

院长致辞

Words from the president

合肥水泥研究设计院以雄厚的研发力量为基础，以优良的设计、先进实用的技术装备和工程总承包为主导，以专业学科多样、梯次结构合理的科技队伍为依托，在水泥工业的节能降耗、环境保护和新材料等领域形成了本院独特的优势。

在激烈的市场竞争中，创新精神始终是合肥水泥研究设计院立于不败之地和发展壮大的不竭动力。将创新成果和市场需求结合起来，是本院全球服务的又一特色；将诚信理念渗透到企业运营的各个环节是我们企业文化的重要内容。我们的宗旨是凭借我们的专业技术、经验知识及团队精神，以一流的技术，一流的产品和一流的服务，为致力于在建材行业发展的投资者，提供全方位的专业服务。

企业的需要、用户的满意是我们始终不渝的追求。愿我们携起手来，共创建材工业的美好明天！

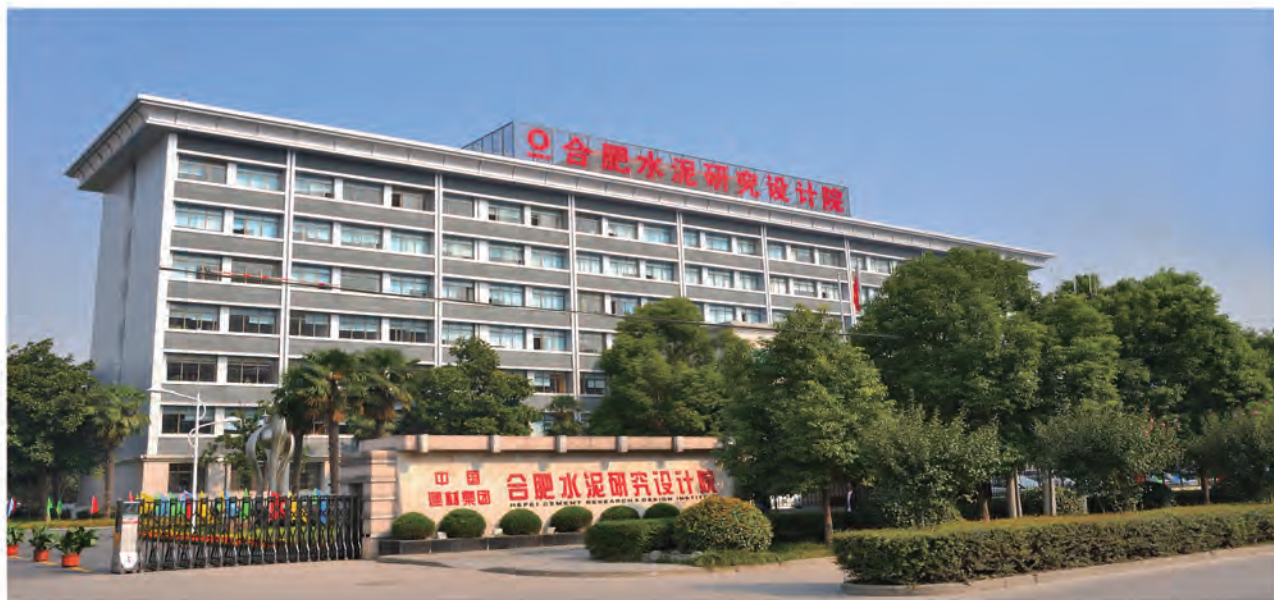


Based on its strength in research and development, backed by excellent design, advanced and practical technology and EPC capability and supported by a technological team with various expertise in a reasonable echelon structure, Hefei Cement Research & Design Institute has formed its particular advantages in many fields such as energy-saving, environment protection and new materials, etc, in cement industry.

In the fierce market competition, the spirit of innovation has always been the perpetual impetus for the institute to remain invincible and grow stronger. And combining innovation achievement with market demand is another characteristic of its service worldwide. Moreover, it is an important part of the corporate culture to integrate into enterprise operation. We aim at serving the investors, who are dedicated to development of building materials industry, by virtue of our specialized technology, experience, knowledge and teamwork as well as first-class, products and services.

The enterprises' demands and customers' satisfaction are our pursuit. Let us join our hands for a brighter future of the building material industry!

Zhou Yunfeng



合肥水泥研究设计院是中国建材行业重点科研院所和甲级设计单位，具有60多年光辉历史，1999年7月改制后进入中国建筑材料集团公司，主要从事水泥生产技术和装备的研发、制造；水泥工厂的工程设计、技术服务、工程监理、设备成套、工程总承包等工作。

近年来，我院以科研优势为基础，走科研成果产业化道路，以工程设计为依托，抓住水泥工业结构调整向大型化发展的良机，积极开拓国际国内市场的工程总承包业务，逐步形成了科研、设计、产业和总承包四位一体的发展格局，成为极具国际竞争实力的水泥行业设备供应商和工程承包商，连续5年在中国建材机械行业20强企业前列前3甲，是全球最大225家国际承包商之一。

建院以来，我院共承担包括国家科技攻关项目和部门重点项目等在内的研究课题400多项，经鉴定的各类科技成果240项，其中大部分项目处于国际领先水平，部分项目填补了国内空白。多项技术成果被列入国家重大科技成果推广计划，为水泥行业的科技进步做出了重要贡献。并形成了以水泥热工、粉体工程、生产过程自动化、环境保护工程、金属材料、水泥原料优化开采和资源综合利用为代表的优势专业，培养了一大批很有造诣的学术带头人和专门人才。

在科技产业方面，我院借助于自身的科技优势，通过对引进技术的消化吸收和创新提高，我院可以为12000t/d熟料及以下不同规模的生产线提供粉磨装备、热工装备、环保装备、耐磨耐热材料、粉粒状物料输送设备、自动化控制和计量装置以及厂房钢构件等，深受国内外用户赞誉。

新中国第一条新型干法窑外分解线是由我院研发，目前，我院已研究开发出1000-12000t/d熟料窑外分解技术及装备，已成功总包或设计完成了12000t/d熟料及以下规模各类生产线500多条，项目遍及沙特阿拉伯、苏丹、俄罗斯、越南、巴基斯坦、埃塞俄比亚、智利、巴西和印度尼西亚等10多个国家。

面对国内外水泥市场的新形势，合肥院将坚持技术创新，加快科技创新体系建设，贯彻低碳经济理念，以水泥工业应用技术与装备开发为重点，加强水泥行业协同处理复杂废弃物的研究，坚持科技成果产业化进程，加强工程设计和工程总承包管理水平，积极开拓市场，拓展业务范围，不断提高国际化程度，努力使合肥院发展成为集研究开发、装备制造、工程设计、工程总承包于一体的国际化、现代化的大型科技型企业。

院况简介

Introduction

Hefei Cement Research & Design Institute (HCRDI) distinguishes himself in the building material industry of China as a pivotal research institute and a state Class-A engineering and design certificate holder, steeped in a glorious history of a good 60 years. Through the system reform in July 1999, it was integrated into China National Building Material Group Corporation (CNBM). The institute is mainly engaged in research and development of technology and equipment applied for cement production, providing engineering, technical service, construction supervision, complete set of equipment for cement plant and contracting turnkey project, etc.

Firmly anchored in the vantage of scientific research, in pursuit of industrialization of research findings, bolstered by the strength in project design, HCRDI has fervently blazed a trail in the local and global market of EPC project contracting. By dint of hard work, he has found his niche in this field and transformed himself into a first-class international EPC project contractor and cement industry equipment supplier, and has come out on top 3 in the building material and mechanical industry among 20 enterprises and is one of 255 international project contractors as well.

Since the establishment of the institute, HCRDI has undertaken a good number of research subjects, including some 400 subjects of Chinese National Programs for Science and Technology Development and major project of local departments, among which 240 subjects research result have been evaluated and acknowledged. Most of the programs are at international level and some of them even filled the research gap. With passing of time, he has become a bellwether in a various field of technology, highlighted by Pyro-processing Technology, Powder Engineering Company, production process automation, Environment Protection Engineering, Metal Material Engineering, optimized exploration of cement raw material and comprehensive utilization of resources, and has been a melting pot of academic experts and professional talents.

In terms of HCRDI' s technology enterprise, drawing on his strong point in technology, through consistent import, digestion, absorption and innovation of overseas technologies, now he is capable of supplying grinding equipment, pyro-processing equipment, environment protection equipment, wear-and-heat-resistant materials, equipment for conveying bulk material, automatic control and measuring device and steel structure, etc and so forth for 12000t/d clinker production lines or the lines of lower capacity, which wins high reputation from clients home and abroad.

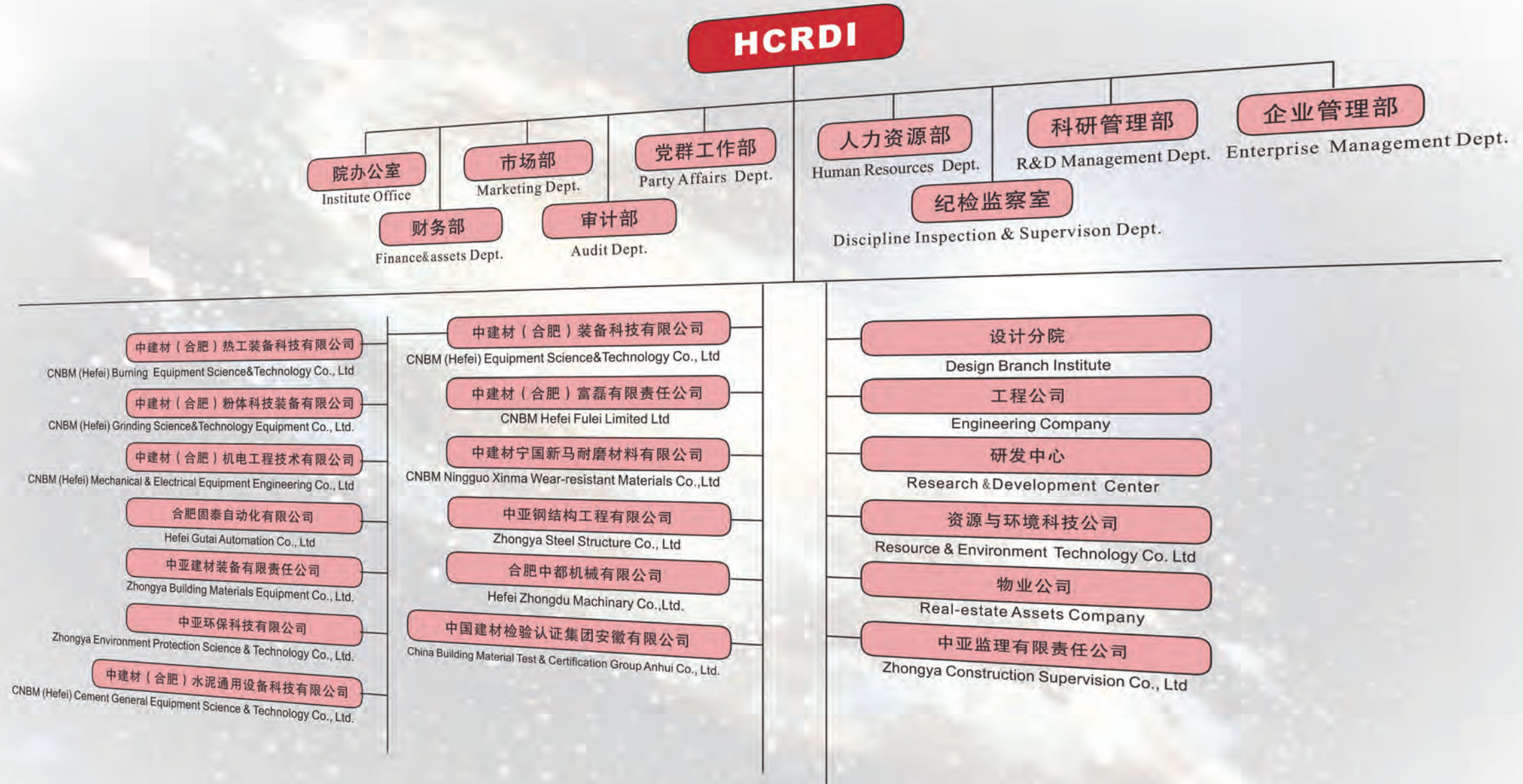
It is HCRDI that has developed the first cement production line applied with new technology of preheating and pre-calcining. And now he has developed preheating and pre-calcining technology and equipment for 1000-12000t/d production line, and has fulfilled contracts for a good 500 production lines of various capacity including 12000t/d, and his footsteps have spreaded all over the world covering more than 10 countries, i.e. KSA, Sudan, Russia, Vietnam, Pakistan, Ethiopia, Chile and Indonesia.

In the face of the new situation of the cement market home and abroad, HCRDI will make every possible effort to innovate his technology, implement the idea of low-carbon economy, energetically open new market, expand scope of service, and strive to become large-scale technology-directed modern international enterprise.



组织结构

Organization Structure



人员优势

Human Resource Strength

人力资源状况

专业技术人员	政府津贴	优高	高级	中级
916	7	112	314	236

(1) 一级注册结构师	13人
(2) 一级注册建筑师	1人
(3) 一级注册建造师	3人
(4) 二级注册建造师	1人
(5) 注册咨询工程师	9人
(6) 注册城市规划师	1人
(7) 工程概预算资格	8人
(8) 压力容器设计资格	2人
(9) 消防设施专项设计资格	7人
(10) 造价工程师	5人
(11) 监理工程师	27人
(12) 注册安全工程师	6人
(13) 注册公用设备工程师	2人
(14) 注册设备监理工程师	11人
(15) 注册电气工程师	14人
(16) 注册化工工程师	20人
(17) 注册会计师	6人

Human resources Status

Post-Senior engineers 112/	Senior engineers 314
Intermediate engineers 236/	
1)A-level registered structuralist	13
2)A-level registered architect	1
3)A-level registered construction engineer	3
4)B-level registered architect	1
5)Registered consulting engineer	9
6)Registered city-planning engineer	1
7)Engineering budget certificate	8
8)Pressure vessel designing certificate	2
9)Fire fighting facility designing certificate	7
10)Costing engineers	5
11)Supervising & managing engineers	27
12)Registered safety engineer	6
13)Registered general equipment engineer	2
14)Registered equipment supervision engineer	11
15)Registered electrical engineer	14
16)Registered cvhematical engineer	20
17)Registered accountant	6

荣誉

Awards



● 国家科技进步奖18项	Award of Scientific and Technological Advancement at the State level	18
● 省部级科技进步奖84项	Award of Scientific and Technological Advancement at the Ministerial level	84
● 国家优秀工程设计铜奖1项	3rd Award of Excellent Engineering Design at the State level	1
● 省部级优秀工程设计奖41项	Award of Excellent Engineering Design at the Ministerial level	41
● 国家发明奖1项	National Invention Award	1
● 专利88项	Patent	88

资质

Certificates



HCRDI

- 工程总承包资格证书 (甲级)
- 工程设计证书 (甲级)
- 专项工程设计证书 (甲级)
- 出口工程设计许可证
- 国家进出口企业资格证书
- 对外承包工程资格证书
- 工程监理资质证书
- 质量管理体系认证证书
- 工程咨询资格证书 (甲级)

- Certificate of Turnkey Project Contracting (class A)
- Engineering Design Certificate (class A)
- Design Certificate for Special Projects (class A)
- License for Export Engineering Design
- Certificate of State Import and Export Enterprise
- Certificate of Overseas Contracting Project Supervision
- Certificate of Contracting Project Supervision
- Quality Management System Certificate
- Engineering Consultation Certificate (class A)

科研产业篇

Industry On Self-Research

HCRDI

粉磨技术与装备

Grinding Technology & Equipment

合肥水泥院是我国建材行业唯一专门从事破碎、粉磨、选粉、分级技术开发研究的研究设计院，也是国家科技部指定的国家级科技成果重点推广计划中“水泥厂粉磨系统节能新技术推广应用”的技术依托单位，在粉磨技术方面先后承担并完成了国家“六·五”至“十·五”国家级科技攻关项目和国家“863计划”等重大科技攻关项目。取得国家科技进步二等奖3项，省部级科技进步奖20项，发明和实用新型专利共18项，起草制定行业标准2项。除进行水泥生产过程中破碎、粉磨、选粉等系统的新工艺、新装备开发研究外，同时注重粉体工程微米加工技术与装备的开发研究，取得了亚微米分级技术与装备、振动粉磨技术与装备一批先进成果。粉磨装备包括HRM系列立式磨，HFCG系列辊压机，SF系列打散分级机和微型选粉机，DS、HES系列高效节能选粉机，ASL超微粉分级机等机械设备，性能指标在国内处于领先水平。另外，我院还拥有先进的美国库尔特公司LS100型激光颗粒分析仪，以及Bond功指数等测试设备，可为水泥厂及非矿行业的各种物料提供准确、可靠的技术检测和分析服务。

HCRDI is specialized in research and development of crushing, grinding, separation and classification in building materials industry in China. It is a designated organization by the State Science Commission to carry out the national energy saving plan in cement plants in general and grinding systems in particular. Since 1980's the institute has been authorized to undertake a national scientific research project in grinding technology during each five-year plan from sixth five-year plan to tenth five-year plan. The total number of these projects is four. Because of these projects, the institute has been awarded with 3 silver medals of National Science and Technology Progress and 20 prizes of ministry level and province level science and technology progress and the institute was also authorized to draft and set the standards for building material industry. The institute develops new processes and new equipment of crushing, grinding, separation etc. for cement plants. In addition, it develops processing technology and equipment for micro and sub-micro powders. Great achievements have been made in this area, for instance, classifying technology and equipment for submicro powder, vibration mill technology and equipment etc. Technical index of a few grinding equipment is taking the leading positions in China. They are HRM vertical roller mill, HFCG Roller Press, High Efficiency Separator, SF Series Classifier, Super Micro Powder Classifier. The institute is equipped with some advanced experiment and testing equipment, for instance, laser particle analyzer imported from USA and Bond index testing equipment. It provides accurate and reliable testing results for the clients.

立磨

HRM型立磨是合肥水泥院吸收国外先进技术结合中国国情研制成功的一种高效节能烘干兼粉磨设备，荣获国家科技进步二等奖。目前，已发展成为生料磨、煤磨、非金属矿用超细粉磨三大系列，用于水泥、电力、冶金和非金属矿超细粉磨等行业，并畅销国内外。

Vertical Mill

HRM type Vertical Roller Mill is developed by HCRDI by integrating acquired foreign technology into Chinese situation, awarded silver medal by National Scientific and Technological Progress. It is a high efficiency energy saving grinding equipment with drying capabilities, which is the first in China. Currently HRM vertical Roller Mills have been developed into three series. One series is for raw meal grinding, the second series for coal grinding and the third series for super grinding of non-ferrous ores. It is widely applied in cement, power, metallurgy



南方水泥浙江虎山集团5000t/d生产线大型原料立式磨HRM4800

HRM4800 vertical roller mill for grinding raw materials of the 5000t/d production line at Zhejiang Hushan Cement Plant of South Cement Group

粉磨技术与装备



Grinding Technology & Equipment



辊压机

具有独立知识产权的国家专利产品。设备设计与制造达到国际同类产品的先进水平。获国家科技进步二等奖、中国名牌、中国建材机械名牌等多项荣誉，取得国家专利3项。由HFCG型辊压机、SF型打散分级机或V型选粉机组成的预粉磨、半终粉磨、联合粉磨等多种工艺，适用于水泥生料、熟料的粉磨，具有明显的增产节电效果。

Roller Press

Roller press is a patent product with independent intellectual property rights. The design and manufacture of the equipment has reached the advanced level of similar foreign products. For this project, the institute was awarded silver medal by National Scientific and Technological Progress. It is a certified new product by the State Science Commission and State Economic and Trade Commission. The state has granted three patents to this technology. The system, composed of HFCG roller press, SF classifier, generates pre-grinding process, semi-finish process, combined grinding process etc. and thus leads to significant energy-saving effect.



辊压机联合粉磨系统 A Roller Press

劣质无烟煤细磨机

为适应回转窑使用劣质煤的需要专门开发的新型煤粉细磨机，在电耗与普通煤磨相同的情况下，可保证煤粉细度（0.08mm方孔筛筛余）小于3-5%。

开流高细高产筛分磨技术

具有我国自主知识产权的开流高细高产筛分磨技术，具有流程简单、运转率高、投资少、运行可靠，维修工作量少，生产费用低、增产节电效果明显等特点，是一种高产品比表面积、高产量、低投资、低能耗的一种新型粉磨技术。共取得四项国家级和部级科技成果奖，获得五国专利授权。

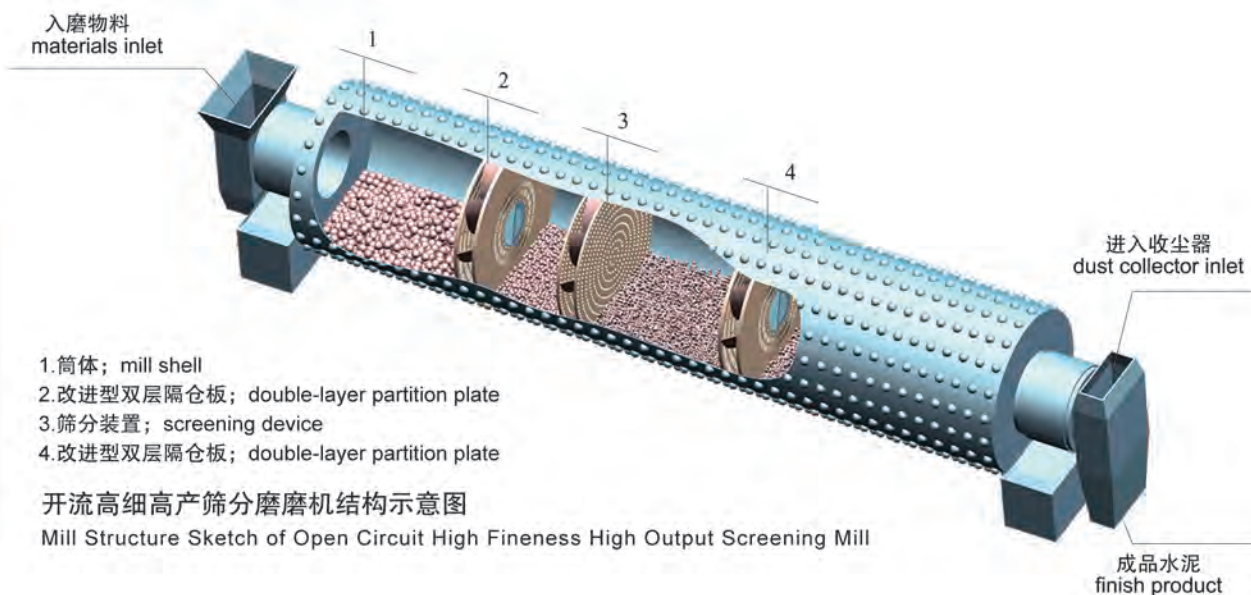


Fine Grinder for Poor Quality Coal

In recent years, technology of burning low quality coal for clinker burning in rotary kilns is rapidly developing. Because the ignition temperature of low quality coal is very high but burning speed is very low, it is necessary to grind low quality coal to high fineness (3-5% residual on 0.08mm sieves). Fine Grinder for Poor Quality Coal is developed to tackle this problem.

Open Circuit High Fineness and High Output Screening Mill Technology

Open Circuit High Fineness and High Output Screening Mill Technology is a technology with Chinese independent intellectual property rights. It has the advantages as follow: simple process flow, high running factor, low investment, reliable operation, less maintenance and saves production cost. This new technology accomplished four national and provincial achievements, and obtained patent authorization rights for five countries.



粉磨技术与装备



Grinding Technology & Equipment

高效选粉机 (DS、HES)

高效选粉机 (DS、HES) 是我院在90年代末研制成功的第三代选粉机, 各项技术指标达到国际先进水平, 并申请了国家实用新型专利, 其选粉效率优于O-Sepa高效选粉机。在此基础上, 根据风扫煤磨的特点研制出能有效控制煤粉细度、大幅度提高风扫煤磨产质量的煤磨选粉机。可选用于水泥行业的生料、水泥、煤粉制备和其它粉体的分

High Efficiency Separator (DS, HES)

High Efficiency Separator (DS, HES) is the third generation separator successfully developed by HCRDI in late 1990's. All the technical indexes have reached the advanced international level. It has applied for the national patent of new and practical technology. Its separating efficiency is higher than O-Sepa high efficiency separator. On the basis of this technology, a special feature is developed to suit the characteristics of air-swept mill so that the fineness of coal powder is effectively controlled, greatly improving the product quality of air-swept mills. The equipment is suitable for the classification of raw meal, cement, coal powder and other powder materials as well as super fineness classification.



自主研发的高效选粉机
High Efficiency Separator developed by HCRDI





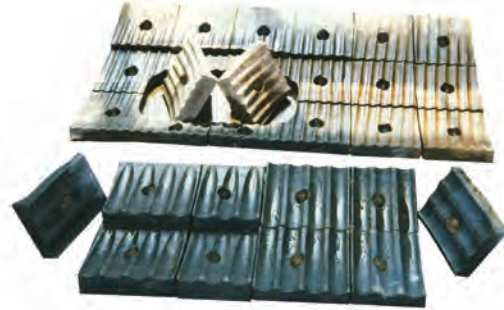
图为加工组装完毕的超细分级机
The picture shows completed assembly
of Super Fine Classifier

超细分级机

ASL系列分级机是引进、消化国外先进技术而研制成功的具有中国特色的高精度微粉分级设备。其技术性能指标达到国际先进水平。是目前国内各类粉体加工行业干法生产小于 $2\mu\text{m}$ 含量达90%以上高品质超细微粉的首选分级加工设备。

Super Fine Classifier

ASL Series Classifier is high precision micro powder classifying equipment, successfully developed as a result of intensive study of the imported advanced technology. Its technical indexes have reached the advanced international level. It is the primary selection in China when it comes to the dry process production of powder processing industry—high quality super fine micro powder, less than $2\mu\text{m}$ content, more than 90%.



节能型衬板

沟槽衬板适用于各种磨机的球仓，依靠其表面的沟槽形状及特殊的排列方式，提高磨机的粉磨效率，达到增产、节电、降低磨损、降低噪声、提高比表面积目的。在国内推广应用数千台磨机，并出口到东南亚各国。

双螺旋型段分级衬板被列为“九五”建材工业科技成果推广项目。适用于各种磨机的段仓，依靠多边形截面的旋转排列和倾斜凸棱的疏密排列，构成双螺旋，可使钢段产生良好的正分级，提高磨机的粉磨效率，特别有利于提高水泥的比表面积。

Energy Saving Liners

Grooved liners can be applied in ball compartments of different mills. The grinding efficiency is enhanced by means of grooves on the surfaces of the liners and special arrangements of the liners to increase mill capacity, save electricity, reduce wear tear and upgrade specific area of the product. The liners have been applied on thousands of mills in China and have been exported to the Southeast Asia.

Double Spiral Type Section Classifying Liners is listed as the promotion project of the National Ninth Five-year plan for its scientific and technological achievement in building material industry. The liners can be used in various sectional compartments of mills. Due to the spiral arrangement of polygonous cross sections and loose and close arrangement of sticking edges, the double spirals are formed. This makes steel bids a good positive classifying effect, increasing grinding efficiency. It is especially good for upgrading the specific area of cement.

热工技术与装备

Burning Technology & Equipment

合肥水泥院是国内最早从事水泥热工技术与装备研制、开发的单位。我国第一台旋风预热器窑（太原）、第一台立筒预热器窑（杭州）、第一条烧煤窑外分解生产线（邳县）、第一条五级旋风预热器生产线（祁江）、第一个“立窑节能示范”项目（滁县）等都在一定时期内引领着我国水泥烧成技术的发展方向，记录着我院为我国水泥烧成技术发展所做出的贡献。我院研制开发的“新型窑外分解”、“五级旋风预热器”、“改进型立筒预热器”、“劣质煤煨烧水泥熟料”、“新型篦冷机”、“单（多）筒冷却机”、“湿磨干烧”、“多通道煤粉燃烧器”、“高效烘干机”、“预加水成球技术”、“新型高效塔篦”、“偏火自动控制”等新工艺、新装备在国内水泥厂被广泛应用。

近年来，我院紧跟世界先进水泥生产技术发展的步伐，对热工技术与装备的大型化做出了新的贡献，并为6000t/d熟料生产线提供了配套技术和装备。

HCRDI is one of the earliest research and design institute engaging in research and development of burning processes and equipment. In certain period of time the institute led the trend of development in China in cement burning technology by such projects as the first cyclone pre-heater kiln (Taiyuan), the first shaft pre-heater kiln (Hangzhou), the first pre-calciner kiln production line (Pixian), first 5-stage cyclone pre-heater kiln production line (Hanjiang) and first shaft kiln cement production demonstration project (Chuxian). They marked the institute's contribution to the country's cement burning technology development. The following new processes and new equipment are widely applied in cement industry in China: the institute-developed new type pre-calciner kiln technology, 5-stage cyclone pre-heater, the improved shaft pre-heater, poor quality coal cement clinker burning technology, new type grate cooler, drum and plenary coolers, wet grinding and dry burning technology, multi-channel coal burner, high efficiency dryer, pre-watered granulation technology, new type high efficiency tower grids, deviated fire automation control and etc.

In the recent years, the institute is following the trend of new development of world's advanced technology. It has made new contributions in large scale development to thermal process technology and equipment. it has developed technology and equipment to meet the technical requirements of 6000t/d clinker production lines.

预热器分解炉

通过冷模试验和计算机反求系统，吸收国内外先进、成熟的预热器分解炉使用经验，我院开发了新型低阻、高效预热器分解炉系统的技术和装备。已为水泥厂提供了1000t/d至12000t/d等系列产品。并研制开发了煅烧无烟煤、劣质煤、废渣和废料等各种类型的预热器分解炉系统。

Pre-heater re-calciners

Through cold mould experiments, computer reverse calculations and through absorbing the advanced, mature experience in using pre-heaters and pre-calciners, the institute developed new type low resistance, high efficiency pre-heater system and equipment. The institute is able to provide a series of products ranging from 1000t/d to 12000t/d. It has developed pre-heater and pre-calciner systems that burn dregs, wastes and low quality coal as fuel.



沙特阿拉伯北方水泥公司6000t/d熟料生产线预热器分解炉系统

Pre-heater pre-calciners, used on 6000 t/d

Clinker production line at North cement Co.,Ltd. Saudi Arabia

热工技术与装备

Burning Technology & Equipment

多通道高效节能燃烧器

多通道高效节能燃烧器是在引进三通道煤粉燃烧器技术的基础上研究开发的新产品。采用了大速差原理，通过组合各种角度的内风旋流器及不同口径的外风喷嘴调节各风道的风速，一次风用量小，使燃烧器不仅能烧烟煤，而且能烧劣质煤、无烟煤（在烧煤的同时也可掺烧油及天然气）。现已开发出适用于1000t/d~7500t/d规模生产线的多规格、多系列燃烧装备。

Multi-channel high efficiency, energy saving burner

Multi-channel high efficiency, energy saving burner is a new product developed on the basis of three-channel burner. It uses the principle of high velocity difference, and adjusts the air velocity in different channels through internal swirling air from different angles and external air nozzles of different diameters. The primary air is small. It systematically burns bituminous coal as well as poor quality coal and anthracite (oil or natural gas can be added while the system is burning coal). It has developed multi-types and multi-series burning equipments which could be used in cement production line with the capacity ranging from 1000tpd to 7500tpd.



用于巴基斯坦Attock水泥有限公司3000t/d预分解窑窑头四通道燃烧器

A 4-channel burner used at the kiln outlet for a 3000 t/d pre-calciner kiln line at Attock Cement Company Pakistan

第四代步进式冷却机

第四代WHEC型步进式冷却机采用了国际最先进的步进式输送技术，各列向单元一起同时向熟料输送方向移动，然后各列向单独或交替进行移动，可以按生产能力配置列向单元数量，模块化设计并且安装便捷；篦床宽度方向冷却风更为均匀，有利于熟料的进一步冷却和热回收，达到高的冷却和热回收效率；可靠性高，低磨损，低的运行费用。目前，已开发出为1500t/d-6000t/d熟料配套的系列产品。

The 4th Generation Cooler

The fourth-generation WHEC walking-floor cooler is developed on the basis of internationally advanced step-type conveying technology, i.e. each radial unit simultaneously moves in the direction to which clinker is conveyed, and then moves separately or alternately; the number of radial units can be determined according to the production capacity requirement; the units are designed in a modularized way and are convenient for erection; the cooling air is more even in the direction of grid bed width, which is conducive for further cooling and heat recovery of the clinker with high efficiency; This cooler has features of high reliability, low abrasion and a low operation cost. At present, a complete series of coolers has been developed for production lines with capacities varying from 1500t/d to 6000t/d clinker.



第四代步进式冷却机 The 4th Generation Cooler



用于江苏龙潭水泥厂3x20m矿渣烘干系统
New Type Energy-saving Rotary Dryer
used at Jiangsu Longtan Cement Plant

新型节能回转式烘干机

新型节能回转式烘干机采用新型组合式扬料装置，结构新颖、独特，配套高温沸腾炉对煤质适应性强，可燃用劣质煤、煤矸石和炉渣，产量高、热耗低。该项技术获国家发明专利及国家科技进步三等奖。

New Type Energy-saving

Rotary Dryer

New Type Energy-saving Rotary Dryer uses new type combined lifting device. The structure is new and unique. It is adaptive to various kinds of coals because of its high temperature fluidization bed, being able to use poor quality coal, gangue and coal dregs. It optimizes three technical parameters of drying system: "coal, material, and air", greatly increasing the heat efficiency of the dryer, increasing output, reducing energy consumption. This technology has been granted the national invention patent and bronze medal of National Science and Technology Progress.

环保技术与装备

Environment Protection Technology & Equipment

合肥水泥院是建材行业最早专门从事环境保护大气污染治理技术及装备研究的单位，是中国环保产业协会常务理事单位、中国硅酸盐学会环境保护分会挂靠单位。拥有一批技术水平高、经验丰富的科研设计队伍。主要从事包括粉尘、脱硫、脱硝在内的大气污染治理及水泥窑协同处理城市生活垃圾方面技术与装备的研究、开发与推广工作，并拥有环境污染治理工程设计甲级证书。先后承担了多项国家级与省部级科技攻关项目，取得了40多项成果，其中获得国家级科技进步奖2项，国家发明奖1项，省部级科技进步奖22项。拥有发明专利7项、实用新型专利30项。有多项产品被评为国家级重点新产品。经不断改进提高、升级换代并拓展新领域，现已开发出了三十个系列数百种规格的各类袋、电除尘器八个系列微机控制装置。引进了美国富乐公司袋除尘技术和EE公司电除尘技术。

合肥水泥院拥有国家环保局颁发的国家环保产品认定企业及产品证书。环保产品除在水泥行业广泛应用外，还进入冶金、电力、化工、机械等行业，并出口到十几个国家。

HCRDI takes the lead in researching technology and equipment of air pollution control in China's building materials industry. It is a standing director of China Association of Environmental Protection Industry, and also a member of Chinese Silicate Society's Environmental Branch. It has a group of experienced, well-trained staff engaged in research of technology and equipment for pollution treatment including dust, desulphurization and denitration, municipal solid waste incineration with cement kiln. It owns Class-A qualification of environment protection engineering. It has undertaken many scientific and technological research projects organized by national and provincial governments, and has gained more than 40 technological achievements. The company has received National Science and Progress Prize for 2 projects, State Invention Prize for one project, Provincial Science and Technology Progress Award for 22 projects, owns 7 Patents for Invention and 30 patents for utility model. Many products have been recognized as new products at China's national level. After years of Improvement, it has been developing thirty series, several hundred models of bag filters and electrostatic precipitators, eight series of micro computer control devices. It acquired bag filter technology from Fuller Company (U.S.A.), electrostatic precipitator technology from EE Company (U.S.A.).

HCRDI is a certified enterprise by Ministry of Environmental Protection of the People's Republic of China for environment protection products. Its products have not only been widely used in cement industry but also in metallurgy, electric power, chemical and machinery industries etc. The products have also been exported to more than 10 countries.



广州珠江水泥厂5000t/d熟料生产线窑尾袋收尘
Bag filter used on kiln inlet at Guangzhou Zhujiang
Cement Plant 5000t/d clinker production line

CDMC高温玻纤袋收尘器

CDMC高温玻纤袋收尘器是合肥水泥院研制的一种高效收尘设备，该收尘器采用三状态清灰工艺，并增加了声波助清灰技术。该收尘器在250℃以下高含尘浓度烟气条件下，能长期高效运行，收尘效率可稳定在99.8%以上，可广泛用于水泥、电力、冶金等工业窑炉废气的净化。水泥行业主要用于回转窑尾、篦式冷却机的烟气收尘。



南阳航天水泥厂6000t/d
熟料生产线窑尾高温玻纤袋收尘器
High Temperature Glass Fabric Dust Collector
used on kiln inlet at Nanyang Cement Plant

Model CXS High Temperature Glass Fabric Dust Collector

CXS Model High Temperature Glass Fabric Dust Collector is high efficiency dust collecting equipment. The equipment uses three-status dust cleaning process, complemented with sound wave dust cleaning facilitation technology. This equipment can operate for long time with high efficiency under the conditions of high concentration smoke at the temperature of 250℃, achieving dust collection efficiency of 99.8%. It can be widely applied in cement, power, iron and steel industries for purifying exhaust gas. In cement industry, it is mainly applied to the kiln inlet and the grate cooler.

钢铁厂大型高温袋收尘器

适用于大型钢铁厂的大型脉喷袋收尘器，包括用于矿热炉，管式回转炉，冶炼区铁水到罐，干燥筒式烘干机等。可满足不同工况，并达到较高的要求。

Large-scale High-temperature Bag Filter for Steel Plants

Large-scale high-temperature jet-pulse bag filters for steel plants can be applied to many places such as ore thermal furnaces, tube rotating furnaces, refinement area and drying drums. It can meet the demand of working condition and the high requirement of the customers.



用于危地马拉钢铁厂大型高温袋收尘器

Large-scale High-temperature Bag Filter for
Steel Plants used at Guatemala Steel Plant



用于岐星水泥厂煤磨收尘的
高浓度、防爆型袋收尘器FGM96-5 (M)
High Concentration, Explosion Proof Bag Dust Collector
FGM96-5(M) used on kiln inlet in Qixing Cement Plant.

FGM(M)系列高浓度、 防爆型袋收尘器

我院最新的科研成果，一九九九年获得国家建材局科技进步三等奖、广泛应用于建材、冶金、电力等行业煤粉制备系统的一级收尘。

该产品采用全新的防燃、防爆结构设计，采用高压脉冲多点喷吹并配以微机自动控制等手段，确保了收尘器长期稳定、高效的运行，能一次性处理含尘浓度高达800g/Nm³的烟尘。

FGM(M) Series High Concentration, Explosion Proof Bag Dust Collector

FGM(M) Series High Concentration, Explosion Proof Bag Dust Collector is the latest scientific achievement of HCRDI. It received the bronze medal of Technology Progress of the State Administration of Building Materials Industry for this achievement. It is widely used for primary dust collection in building materials, metallurgy and power industry with regard to coal preparation.

This product is completely a new design in structure for fire-proof and explosion proof for the cleaning of high concentration coal powder, automatically controlled jet pulse at high pressure is used. This ensures long term and high efficiency operation. It is able to handle concentration smoke up to 800g/Nm³.

烘干机玻纤袋收尘器

烘干机玻纤袋收尘器 (HKD、LFEF) 是为烘干机废气收尘专门研制的新产品，采用上进气、自动分室反吹风清灰方式，出口排放浓度保证低于国家标准。滤袋平均使用寿命可达二年以上。该技术被评为国家级新产品，国家环保局最佳实用技术。

Glass Fabric Dust Filter for Dryers

It is an anti-dew concentration glass fabric dust filter. It is a new product specially designed for the dust collection of exhaust gas from dryers. The air enters from the top, automatically cleaning the dust compartments with reverse air blowing into one compartment after another, The dust concentration at the outlet is lower than what is required by national standard. The average life of filter bags is more than 2 years. The equipment has received the title of National New Product from the State Science Commission and the title of Best Practical Technology from the State Administration of Environment Protection.



用于南京青龙山水泥厂烘干机收尘LFEF358-7
LFEF358-7 Bag Dust Filter Used at
Qinglongshan Cement Plant



用于芜湖朱家桥70万吨粉磨系统
45万m³/h风量的气箱脉冲袋收尘器
A plenum pulse dust collector, air volume
450,000 m³/h at Wuhu Zhujiqiao Grinding Plant

FGM系列气箱脉冲袋收尘器

FGM系列气箱脉冲袋收尘器是引进美国富乐公司技术，并在此基础上加以完善、提高的新一代高浓度、高效率袋收尘器，九七年获国家建材局科技进步三等奖，并列入国家“九五”建材工业科技成果重点推广项目。该系列产品集分室反吹和喷吹脉冲等收尘器的优点，在无预收尘设备的情况下，能一次性处理含尘浓度达1000g/Nm³的烟尘，确保排放达标。

Plenum Pulse Bag Dust Collector, Series FGM Collector

FGM Series Plenum Pulse Bag Dust Collector is an imported technology from Fuller Company USA. It has been improved by the institute over the years. It is a new generation, high concentration, high efficiency bag dust collector. In 1997, it received a bronze medal of technology progress from The State Administration of Building Materials. It is listed in the national ninth five-year plan as an important promotion project. The equipment combines the advantages of both reverse air method and jet pulse dust method. It can handle dust-laden smoke with dust concentration of 1000g/Nm³, assuring the emission to reach the national standard.

电收尘器

合肥水泥院在国内最先研制成功宽间距电收尘器，并应用于水泥行业粉尘治理。96年引进美国EE公司具有国际先进水平的电收尘器技术，在此基础上消化、吸收、开发了CDPK-E型电收尘器，成功应用于建材、冶金、电力等领域。

Electrostatic Precipitator

The institute took the lead in China in successfully developing the wide width electrostatic precipitator. It has been applied for dust treatment in cement industry in China. In 1996, the institute acquired internationally advanced electrostatic precipitator technology from EE Company USA. On the basis of the acquired technology, the institute developed an electrostatic precipitator of Model CDPK-E. It has been successfully applied in building materials, metallurgy, power industries etc.



用于内蒙古冀东水泥有限责任公司5000t/d生产线窑头电收尘CDPK-E, 240m²
240m², Model CDPK-E Electrostatic Precipitator
Used at Jidong Cement Co., Ltd Inner Mongolia

电气及自动化、计量技术与装备

Electrical and Automation, Weighing Technology and Equipment

合肥水泥院是建材行业最早从事计量、电气及生产过程自动化技术与装备的研究、设计、开发、生产及技术服务、设备成套和工程承包的专业院，是中国硅酸盐学会水泥自动化专业委员会的挂靠单位。合肥水泥院自动化专业被原国家建材局列为重点支持的优势学科。

通过承担多个“国家重大科技攻关项目”和十几个省部级科研项目的研究开发及数百条水泥生产线的工程设计，在物料计量技术与设备、水泥生产检测装置、控制技术和计算机应用等方面取得了几十项科研成果。其中，获国家专利四项，部级科技进步二等奖三项，部级科技进步三等奖五项。培养了一批掌握高新技术、富有实践经验的中青年技术人才；造就了我院在国内水泥生产过程自动化、物料计量技术与装备方面的领先地位。我院的自动化技术和产品以水泥行业为起点，并广泛应用在冶金、化工、电力、煤炭、食品及民用等领域。

HCRDI is one of the earliest institutions in China engaged in research and development, design, manufacture, technical service, complete set of equipment supply and project contractor of weighing, electrical and process automation technology and equipment. It is the key member of Cement Automation Committee of China Silicate Society. Automation was the key development discipline under the support of original State Administration of Building Materials.

Through several National Scientific and Technological Development Projects and Provincial and Ministry Level Science and Technological Development Projects as well as design of several hundred cement production lines, the institute has made plenty of achievements in materials weighing technology and equipment, cement production detecting device, control technology and computer applications. It is the owner of four national patents. It was awarded silver medals of technological progress of ministry level for two projects, bronze medals of ministry level for two projects, bronze medals of technological progress of ministry level for five projects. It has a young and middle-aged team with expertise of high technology coupled with rich practical experience. It takes leading position in the area of cement production process control technology, material weighing position in the area of cement production process control technology, material weighing technology and equipment. The automation technology and products of the institute have also extended into other industrial areas such as iron and steel, chemical, power, coal mining, food processing and even the area of people's everyday life.



SPF粉体定量喂料控制系统

SPF粉体定量喂料控制系统简称“转子秤”，具有密封性好、防止冲料、喂料稳定、灵敏度高、适应高粉尘环境的特点。系统软件采用双回路前馈调节、有效地抑制了系统的扰动，增强了系统的鲁棒性，对计量倾泻性细粉物料有良好的适应性。广泛用于粉体物料流量计量和定量控制。典型应用包括水泥、冶金、发电等燃烧系统的煤粉定量给煤、粉煤灰计量及定量控制。

SPF Constant Feed Control System for Powder Materials

The system is simply called "Rotary Scale". It is highly sensitive and very adaptive to dusty environment. The system software uses double circuits, feed forward adjustments, efficiently restraining the system turbulence, increasing the toughness of the system. It is very good in weighing fine powder materials which is pouring down from the top. It can be used for weighing and control of powder materials flow, especially good for constant feed of control of coal powder.



内蒙古华立水泥有限公司5000t/d生产线
回转窑、分解炉喂煤系统
Coal feed system for both the rotary kiln and
pre-calciner of a 5000 t/d production line
at Huali Cement Co.,Ltd Inner Mongolia

科里奥利流量计

科里奥利流量计是一种全新概念的粉体物料计量装置，是吸收国外最先进技术，由我院研制的一项专利产品。该装置应用科里奥利力作用的力学原理制成。由科里奥利流量计组成的KXT粉体物料计量与控制系统主要用于煤粉计量与控制；入窑生料计量与控制；粉煤灰等其他粉体物料计量与控制。目前，已实现为700-6000t/d水泥生产线燃煤系统提供配套系列产品。

Coriolis Flow Meter

Coriolis Flow Meter: It is a completely a new concept weighing device. It is institute's patent product developed by absorbing most advanced foreign technology. The weighing principle of Coriolis Flow Meter is Coriolis' force theory. KXT Powder Material Meter Control System composed mainly of Coriolis flow meter is used to weigh and control the amount of coal to be fired inside rotary kilns and pre-calciners, feeding of raw meal into rotary kilns etc. Till now, a complete series have been developed to suit coal firing systems of cement production lines varying from 700-6000 tons clinker per day.

电气及自动化、计量技术与装备

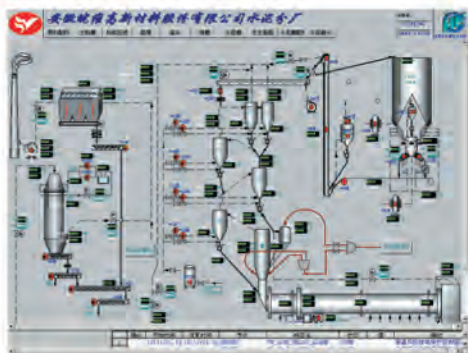
Electrical and Automation, Weighing Technology and Equipment

PCS生产过程控制系统

PCS生产过程控制系统是采用了工业以太网、现场总线、优化控制技术等多项先进技术的新一代DCS系统，具有性能稳定、技术先进、投资低等优点。经过多家水泥厂成功应用，已形成具有合肥水泥院特色的适用不同规模水泥厂的系列化PCS控制系统及高水平的应用软件。

PCS Production Process Control System

It is a new generation of DCS that has integrated mainly items of advanced technology, i.e. industrial ethernet, field bus, optimization control etc. It has the advantages of stable features, advanced technology, low investment etc. After successful applications in many cement plants, the institute has developed series of PCS control systems and high standard application software that suits cement plants of different scales.

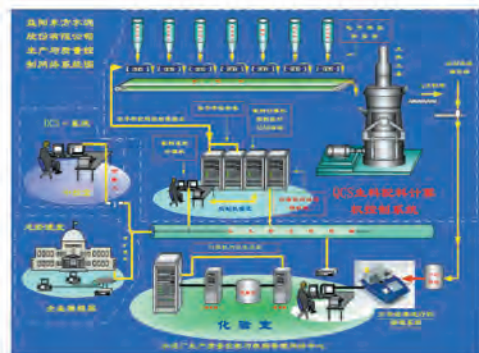


QCS水泥生料质量控制系统

QCS水泥生料质量控制系统凝结着合肥水泥院从事水泥生产过程自动化技术研究几代科技人员的多年工作成果。其成功应用在水泥生产线上已有二十多年的历史，对于稳定水泥烧成系统热工制度，提高熟料产量和质量作用明显，尤其对实施水泥质量新标准具有十分重要的意义。

QCS Cement Raw Meal Quality Control System

It is the technology that has cemented the efforts of several generations of scientific researchers of the institute. It has been 20 years since its first application on a cement production line. It plays an important role in stabilizing the clinker burning system as well as in increasing clinker production and increasing clinker quality. It is of great significance in implementation of new cement quality standards.





TDG系列调速皮带定量给料机

TDG系列调速皮带定量给料机是合肥水泥院在三十余年研究基础上、结合国外先进计量技术，不断改进、优化的成熟产品。该设备性能稳定、计量准确，适用于散粒状、块状、粉状物料连续动态计量与定量给料。已广泛应用于建材、冶金、化工、电力、煤炭及食品等行业。

TDG Series Variable Speed Belt Weighing Feeder

Based on thirty years of research, combined with advanced weighing technology acquired from abroad, TDG Series Variable Speed Belt Weighing Feeder has been improved and optimized into a mature product. The equipment runs smoothly, weighs accurately and is suitable for the dynamic weighing and constant weight feeding of bulk, lump and powder materials. It is widely applied in building materials, iron and steel, chemical, power, coal mining, food processing industries and etc.

工业电视

合肥水泥院研制的工业电视在国内同类产品首家通过国家级鉴定。经过多年的开发、推广和应用和实践，已形成了电视型(FW-TV)和多媒体型(FW-MC)2个系列的成熟产品。广泛应用于生产线设备运转状况、回转窑窑头看火和篦冷机篦床熟料状态的监控。

Industrial TV

The institute is the first in China that has passed the national assessment for this type of technology. Through many years of research and development, promotion and application, the technology has become mature with two series of products. one is TV type (FW-TV), the other is multi-media type (FW-MC), It is widely used for supervision of production equipment's operating status, rotary kiln flames and clinker status on grate beds of grate cooler.

回转窑胴体温度扫描系统

经过我院十几年的开发研究，已经形成了“步进”、“快速”和“线扫描”三个层次的系列产品。适用于各种工艺类型、不同规格的回转窑，技术性能达到国际先进水平。

Kiln Shell Temperature Scanner System

Through more than a decade's research and development, the institute has developed three series of products: "stepping", "fast speed" and "line scanning". They are suitable for different kinds of processes, various sizes of rotary kiln. The technical features have reached advanced international standard.

低压配电柜、仪表柜及专用控制柜

该系列产品已广泛应用在水泥、冶金等工业及商业、民用领域。其中全数字直流调速、数字变频调速、电机软启动及稀油站控制装置、综合启动柜等以其高性能价格比获得广泛应用。

Low Voltage Power Distribution Cabinet, Instrumentation Cabinet and Special Purpose Control Cabinet

This series of products are widely used in cement, iron and steel as well as in business and civil engineering. The following items of technology have high performance to price ratio and are most widely applied. They are complete digital DC speed control system, AC frequency-variable speed regulator, motor soft start technology, control device and comprehensive starting cabinet for dilute oil



通用设备

General Equipment

合肥水泥院在通用设备方面，以科研为先导，以实践作检验，汲取国际先进技术，结合实际进行研究开发，取得了许多先进实用的科研成果和可替代进口的高技术产品。其主导产品有输送设备、破碎筛分设备、散装及均化设备、耐磨耐热材料等。我院提供的系列通用设备和非标准设备可为用户实行设计、制造、安装、调试、达标等全方位服务。

With respect to general equipment, HCRDI has achieved many scientific and technological results that can replace/substitute imported high-tech products. The products in General Equipment Category are conveying equipment, crushing and classification equipment, bulk loading and homogenization equipment, wear-resistant materials etc. The institute is capable of supplying series of general equipment and non-standard equipment. It undertakes customized design, manufacture, installation, testing and other services.



配套10000t/d生产线的钢丝胶带斗式提升机
Elevators for 10000 t/d cement production line

N-TGD钢丝胶带斗式提升机

N-TGD钢丝胶带斗式提升机以特殊专利设计，使胶带长期运行不致撕裂，具有单机超高提升特点，完全可以替代同类型进口设备。主要用于新型干法水泥厂窑尾入窑生料输送、大型生料均化库、水泥库入库物料输送等粉状物料输送系统。荣获国家科技进步二等奖。目前，已在万吨熟料水泥生产线投入使用。

Steel Wire Belt Conveyor Bucket Elevator, Model N-TGD

Model N-TGD Steel Wire Belt Conveyor Bucket Elevator uses steel wire belt as pulling part made according to a special patent. There will be no cracking after long time operation. The equipment can serve as a substitute product to the similar imported products. It has been mainly used for materials transportation at the inlet side of new type dry process kiln, in large scale raw meal homogenization silos, cement silos etc. It is now used as standard equipment for 10000 t/d production lines. It was awarded the second prize of National Prize for Progress in Science and Technology.

PCX系列高效细碎机

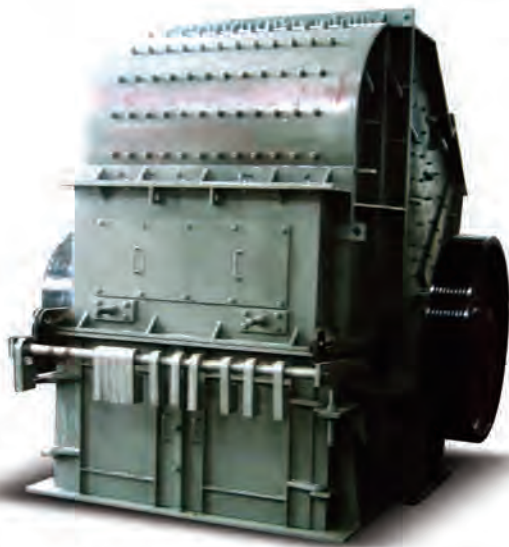
用于水泥熟料、石灰石、煤矸石等中高硬度物料的细破碎，处理能力20-300t/h，出机粒度平均 $\leq 5\text{mm}$ 。该机具有锤头使用寿命长，耐高温、振动小的特点。对于石灰石、方解石等大块物料的破碎，可选用PCZ系列强力破碎机，处理能力100-1200t/h，入机粒度400-1500mm，出机粒度平均 $\leq 25\text{mm}$ 。

另外，我院研制的与破碎机配套的YAX系列圆振动筛，可用于各种物料的筛分，处理能力60-850t/h。

PCX Series High Efficiency Fine Crusher

It is used for fine crushing of medium hard materials such as cement clinker, gypsum, and coal gangue. The capacity is 20-300 t/h. The output particle average $\leq 5\text{mm}$. The hammer of the crusher is made of cobalt based alloy and alloying cast iron, and it has a long service life. This machine also has the features of high temperature resistance and small vibration. For the crushing of big lumps such as limestone and calcite, PCZ series is recommended. The capacity is 100-1200 t/h, inlet size 400-1500mm, outlet particle average $\leq 25\text{mm}$.

In addition, the institute has developed a round vibrating screen operating with the crusher. It is used for classification of different materials. The capacity is 60-850t/h.



用于哈尔滨三岭水泥有限公司的
PCX-300S型高效细碎机，300t/h

PCX-300S High Efficiency Fine Crusher, 300t/h,
used on Haerbin Sanling Cement Company Ltd.



用于温州中山水泥股份有限公司
低速高浓度气力输送泵 (DB泵)，120t/h
DB Pump, 120t/h, Used on Wenzhou Zhongshan
Cement Share Holding Company

低速高浓度气力输送泵 (DB泵)

引进、吸收美国富乐公司技术而开发的气力输送系统，填补了国内大管径空白。具有输送量大 (300t/h)、距离远 (>2000米)、电耗低 (<1KWh/t) 等特点。适用于输送水泥、生料、煤粉、粉煤灰、有机硅等粉料状物料。该项目产品荣获国家科技进步三等奖。

Low Speed High Density Pneumatic Conveying Pump (DB Pump)

The conveying system is made as the result of digestion of imported technology from Fuller Company USA. The characteristics of this system is large volume transportation (300t/h), long distant transportation (>2000 m), low power consumption (<1Wh/t). It is suitable for conveying powder type materials such as cement, raw meal, fly ash, organic silicon etc. The project was awarded copper medal of National Science and Technology Progress.

长距离惯性振动输送机

用于输送高温、高磨损的块、料状物料、输送距离长，可满负荷启动，可多点进出料，防震、隔热、吸音效果好。

Long Distance Inertia Vibrating Conveyor

It is used for long distance transportation of lump and particle materials of high temperature, high wear. It can be started with full load. It has a feature of multi-inlets of materials. It provides good insulation to vibration, heat and noise.



散装设施

- 1、SZ系列水泥散装机：用于粉体物料的库底、库侧散装装车，除尘效果好，装车效率高，工艺适应性强。
- 2、SLZ系列熟料装车机：用于水泥熟料等颗粒状物料的装车。产品经久耐用、防尘效果好、装车可靠。
- 3、散装水泥装船及卸船系统：装船能力 < 1000t/h，摇臂回转半径7.5m，负压卸船能力 < 100t/h，正压输送距离 < 2000m。

Bulk Loading Facilities

SZ Series Cement Bulk Loading Machine is used at bottoms of silos, or at silo sides for truck loading. Dusting effect of the facility is excellent, loading efficiency is high, it is adaptable to various processes.

SLZ Series Clinker Loading Machine is used for loading clinker or other particle materials onto trucks or railway wagons. The product has long service life, good dust protection features. Loading is reliable.

Bulk Cement Ship Loader and Unloader: The loading capacity is < 1000t/h, the swinging arm has a swinging radius of 7.5m. Suction ship unloading capacity is < 100t/h. Pressure conveying distance is < 2000m.



江苏京阳水泥有限公司水泥散装码头装船系统
Ship Loading System for Bulk Cement on river dock
at Jiangsu Jingyang Cement Co.,Ltd

通用设备

General Equipment

耐磨耐热材料

合肥水泥院在金属材料研究方面有较强的实力，先后研究开发了熟料破碎机专用锤头，为湿法磨机配套的专用衬板、SR-I型铬镍耐热钢、大中型磨机中碳多元合金钢衬板、高碳奥氏体锰钢、高碳中铬合金钢、TU-I型高铬铸铁、低铬合金磨球等。作为建材、冶金等行业不同工况条件下的易损件，其经济指标达到国际先进水平。



Wear and heat resistant materials

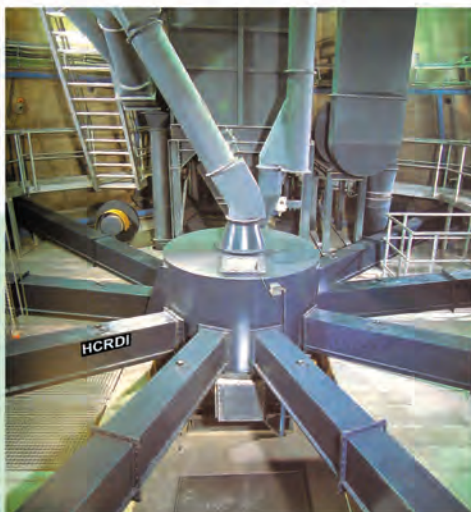
Research of metal materials is of great strength at the institute. The institute has developed special hammers for clinker crushers, special liners for wet type mills, chromium-nickel heat resistant steel, Model SR-J, medium carbon multi-element alloy liners for large and medium size mills, high carbon austenite manganese steel, high carbon medium chromium alloy, high chromium cast iron Model TU-I, low chromium alloy mill balls and etc. The products are widely used in building materials and metallurgy industries for applications under different operating conditions. The economic index has reached the international advanced level.

均化设施

合肥水泥院研制的连续式生料（水泥）均化库有中心室型、多股流型、控制流型、切线型等，可提供规格 $\Phi 10m$ - $\Phi 28m$ 的系列产品。

Homogenization Facility

Continuous Raw Meal (Cement) Homogenization Silo developed by HCRDI has different models: Center room type, Multi-stream type, Controlled stream type and Tangent line type. Specification: $\Phi 10m$ - $28m$.



新材料技术

New Materials Technology

合肥水泥院拥有原料品种研究室、测试中心，混凝土及材料研究室，除具有水泥全套物理和化学测试设备外，还拥有细度分析、X-Ray分析、DTA分析、火焰光度分析等大型试验仪器。

HCRDI owns a center that is specialized in testing and analyzing raw materials, cement, concrete and other gelling materials. Besides a complete set of equipment for chemical and physical set of equipment for chemical and physical analysis, it also owns large testing equipment, such as fineness analyzer, X-ray spectrometer, DTA analyzer, flame photometer and etc.



大型精密仪器——X射线衍射仪，可对物相进行精确测定
X-ray diffraction analyser is now making accurate measurement for substantial phase of the material

新材料

合肥水泥院拥有镁质胶凝材料产品的全套技术（包括波镁平板、通用管道、波瓦、隔墙材料以及镁质胶凝材料改性剂等）；水泥改性剂（包括早强剂、减水剂、缓凝剂、养护剂、沥青抗剥落剂等）。其中，我院自主开发的HH-99水泥分散剂是采用新型合成方法制成的界面活性剂，可增加水泥强度8-10标号，提高磨机台时产量10-25%。

New Materials

HCRDI owns a complete set of technology concerning magnesium gelling materials (including wave-shaped magnesium plates, general purpose pipes, wave-shaped tiles, partition boards as well as modification agents for magnesium materials etc.); cement modification agents (early strength agents, water reducing agents, retarder, curing agent, bitumen surface protection agent and etc). Cement distribution agent HH-99 is developed by means of a new synthetic method. It is an interface activated agent that can increase cement strength by 80-100MPa and output of the mill by 10-25%.

新技术

合肥水泥院可进行特种水泥的配料及设计、莫来石的煅烧及设计、陶粒的生产及设计。

New Technology

HCRDI makes proportioning and designs of specialty cement, calcinations of moderates, production and design of ceramic particles.

原材料试验及测试

合肥水泥院可进行特种水泥的配料易烧性、易磨性全套试验；湿法厂料浆性能试验，以及水泥成分分析、物理测试；DTA和X-Ray等微观分析及混凝土相关试验。同时还拥有经国家质量技术监督局认证、认可并授权的国家建材工业镁质胶凝材料测试中心，主要从事镁质胶凝材料的原材料、产品的质量检验测试。

Raw Material Experiment and Testing

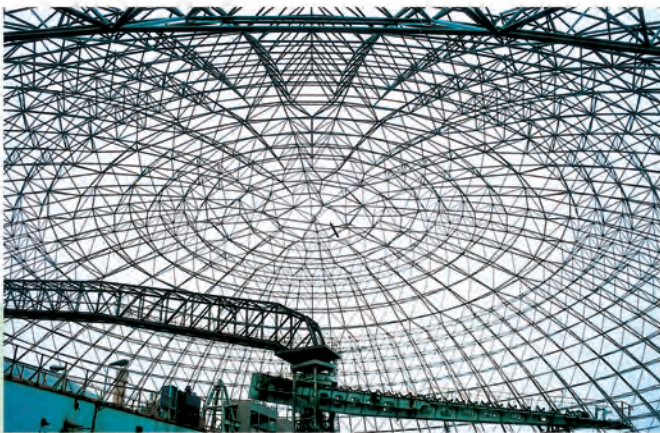
HCRDI is able to do burnability tests, grindability tests, cement slurry tests for cement plants in case of wet process production, chemical and physical analysis as well as micro analysis with DTA and x-ray. The institute possesses qualifications issued by the State Administration of Quality and Technology Supervision. It is an authorized testing center of magnesium gelling products, undertaking quality inspection and testing for magnesium related raw materials and products.

钢结构工程

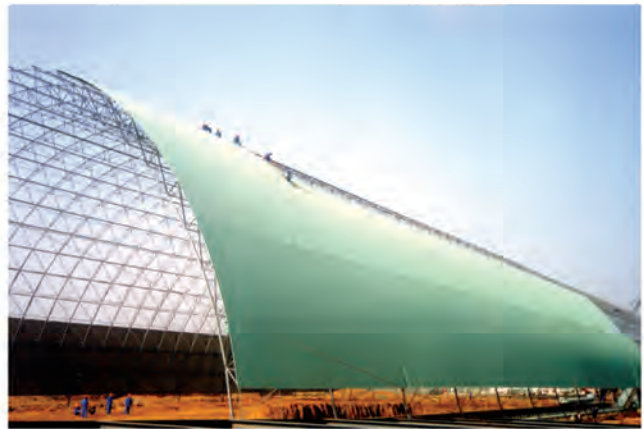
Steel Structure Engineering

中亚钢结构工程公司是合肥水泥院的子公司，是集科研、设计、制造、安装服务为一体的技术密集型的建筑安装企业，技术力量雄厚、生产设备先进、综合实力强劲，主要从事空间钢结构、钢网架、钢彩板业务。公司通过了建设部审核，并获得钢结构、钢网架施工一级资质，具有承接各类大型钢结构建筑工程的能力，在国内外承接过数十项大型工程，有良好的业绩。

Anhui Zhongya Steel Structure Engineering Company is a subsidiary of HCRDI. It combines research, design, manufacture and erection into one. It has strong technical strength, advanced manufacturing equipment, comprehensive capability. Its major business is steel structure, steel sheds and frames and color steel plates. It has passed the check by Ministry of Construction and obtained first class qualification in constructing steel structure and steel sheds and frames. It is capable of undertaking construction of various types of large-scale steel structure projects. It has completed more than ten large construction projects both at home and abroad with outstanding performance.



枞阳海螺石灰石堆棚 $\Phi 98m \times 32m$
Zongyang Hailuo Limestone Stack Square $\Phi 98m \times 32m$



池州海螺辅材及原煤堆棚 $55m$ (跨) $\times 458m$ (长)
Chizhou Hailuo Auxiliary and Raw Coal Stack
Square $55m$ (span) $\times 458m$ (length)

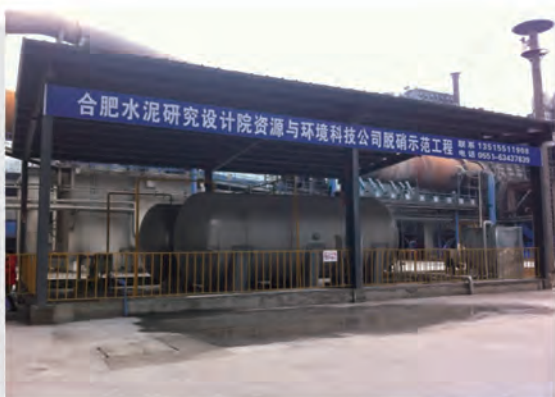
资源与环境治理



Resource and Environmental Management

合肥院致力于研发烟气环保治理、废弃物处置相关技术和装备，主要技术和产品涉及水泥窑、燃煤电厂烟气脱硝；水泥窑协同处置生活垃圾和污泥；重金属排放控制措施及治理装等。技术和产品的应用领域也从水泥行业逐步扩展并成功应用到电力、冶金、化工等其他行业，得到广泛的认可。

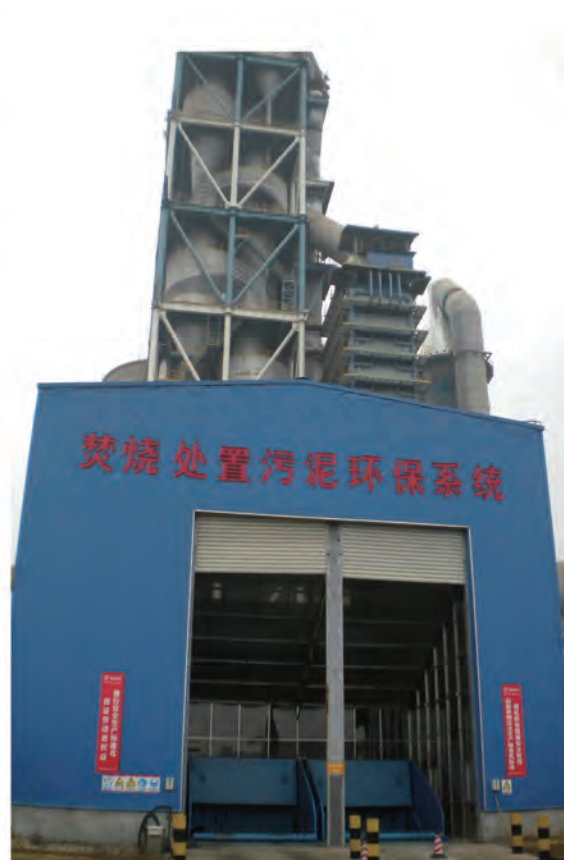
HCRDI devotes itself to developing the relevant technology and equipment of flue gas environmental management and waste disposal. The main technology and products are related to flue gas de-nitrification in cement kiln and coal-fired power plant, the domestic waste and sludge co-processing by cement kiln, regulatory measures and treatment on heavy metal emission, and etc. All the mentioned technology and products are widely recognized, whose application is gradually spread from the cement industry to the electric power, metallurgy, chemical and other industries successfully.



南方水泥安徽大江水泥有限公司4500t/d熟料水泥生产线



北方水泥德全汪清水泥有限公司4000t/d熟料水泥生产线



湖州2x5000t/d水泥窑协同处置200吨/日污泥项目

产业园简介

Industrial Park of HCRDI

合肥水泥研究设计院高科技产业园位于合肥经济技术开发区和肥西桃花工业园区内，总占地330余亩，厂房建筑面积8万多平方米，厂区生产、办公、生活等设施完善，交通便利。

园区按照现代企业管理模式，建立并有效实施了标准化管理体系。主要产品有粉磨节能设备、环保设备、计量输送设备、自动控制设备等，产品畅销全国各地，部分产品远销国外。

Hi-Tech Industrial Park of HCRDI is located in Hefei Economic and Technological Development Zone and Feixi Taohua Industrial Park, taking up more than 22 hectares of land with the covered area of more than 80,000 square meters. The factory is possessed of complete production, office and domestic facilities, whose transportation is very convenient.

The park effectively implements the standardization management system in accordance with modern enterprise management model. The main products include energy saving grinding equipment, environment protection equipment, weighing and conveying equipment, automation and control equipment, which sell well both at home and abroad.



研发中心

Research and Development Center

研发中心试验基地占地5280平方米，包含立式磨试验室、挤压粉磨试验室、超细分级试验室、计量及定量给料系统试验室、研发中心垃圾、污泥、固废试验室、通用设备公司试验室、环保公司试验室、热工中心试验室、节能型粉体物料垂直输送和计量试验室等涵盖水泥行业各个环节的试验室，旨在打造国内领先，国际先进的一流水泥行业研发试验基地，为合肥院的可持续发展提供技术保障。

Test base of research and development center covers an area of 5280 square meters. It relates to all aspects of cement industrial laboratory, including vertical mill test room, extrusion grinding test room, super fine classifying test room, dosing and quantitative feeding system laboratory, R&D center waste, sludge, waste laboratory, general equipment company laboratory, environmental protection company laboratory, pyro-processing center laboratory, energy saving power material vertical conveying and dosing laboratory. The research and design center aims to develop the domestically leading and internationally advanced cement industrial R & D test base, which provides the technical guarantee for the sustainable development of HCRDI.



工程设计篇

Design Engineering

HCRDI



设计成果



Design Achievements



合肥水泥院拥有一支专业工种齐全、技术力量雄厚、现场经验丰富的设计队伍。以丰硕的科研成果和消化引进先进技术为坚实后盾，在水泥厂设计和技术改造中，独具因地制宜、投资省、指标先进、调试服务周到等特色。按照GB/T19001-ISO9001标准建立的设计质量保证体系和计算机CAD辅助设计确保了优秀的设计质量。建院以来，已承接国内外日产300-6000吨各种类型水泥熟料生产线设计和老厂改造900多项，并获得50项国家、部（省）级优秀工程设计奖。

我院在1982年10月完成国家“六五”攻关项目“邳县水泥厂日产700吨熟料烧煤窑外分解工艺线”达标验收，并荣获“日产700-1000吨水泥煨烧窑外分解技术的开发与推广”国家科技进步二等奖，并在国内率先开发推广了3000t/d和6000t/d窑外分解工艺生产线。

近年来，我院的工程设计不断向大型化和国际市场迈进，相继承担沙特纳吉兰水泥公司6000t/d熟料生产线、沙特北方水泥有限公司6000t/d熟料生产线、约旦ALMAFRAQ水泥厂6000t/d熟料生产线、南阳航天水泥厂6000t/d及3000t/d熟料生产线、新疆青松建化股份有限公司6000t/d熟料生产线、皖维高新材料股份有限公司6000t/d熟料生产线、越南广福水泥有限公司5000t/d熟料生产线、南方水泥浙江虎山集团5000t/d熟料生产线、龙元建设安徽有限公司5000t/d熟料生产线、陕西众喜水泥公司5000t/d熟料生产线等数十条大型水泥生产线的工程设计和技术服务，并顺利获得业主的验收证书，广泛赢得业主好评。

我院设计的质量方针是“求实创新，精益求精，优质服务，诚实守信”。我们将继续以先进的技术、一流的设计、良好的信誉为水泥工业的发展做出更大的贡献！

HCRDI has a design team with rich field experience, technical strength in all types of works. Backed up by plentiful scientific research results and digested imported technology, it designs new cement plants and modernizes old cement plants. The characteristics of HCRDI's design service are made suitable to local conditions, saving investment, meeting advanced performance and production index and offering attentive commissioning service. The quality of design is guaranteed by a quality assurance system and computer-aided design. In recent years, the institute has undertaken the design of 900 production lines, new constructions and modernization, with capacities varying from 300-6000 tons clinder per day. 36 of them were awarded the prized of excellent design of either national level or ministry (provincial) level.

In October 1982, HCRDI successfully completed a coal-fired 700 tons clinker per day pre-calciner kiln production line in Pixian, Jiangsu Province, one of the national scientific research projects of sixth five-year plan. The institute was awarded the silver medal of National Science and Technology Progress for this project. HCRDI took the lead in China in developing 3000 t/d and 6000t/d pre-calciner kiln production lines.

In recent years, the engineering of HCRDI has continuously stridden forward the large scale and international markets. The institute successively undertook engineering design and technical service of many cement production lines, such as 6000t/d Clinker Production Line at Najran Cement Co., Ltd. in Saudi Arabia, 6000t/d Clinker Production Line at North Cement Co., Ltd. in Saudi Arabia, 6000 t/d Clinker Production Line at ALMAFRAQ Cement Plant in Jordan, 6000t/d and 3000t/d Clinker Production lines at Nayang Cement Corporation, 6000 t/d Clinker Production Line at Xijiang Qingsong Cement Company,

6000 t/d Clinker Production Line at Wanwei High & New Materials Co., Ltd., 5000t/d Clinker Production Line at Quang Phuc Cement Company in Vietnam , 5000 t/d Clinker Production Line at Zhejiang Hushan Cement Plant of South Cement Group, 5000t/d Clinker Production Line at Longyuan Construction Anhui Co., Ltd.and 5000t/d Clinker Production Line at Shanxi Zhongxi Cement Co., Ltd. etc. All of these projects successfully obtain the acceptance certificate and are widely praised by the owner.

The guiding principle of the institute in terms of design quality is "Realistic Attitude, Innovation Spirit, Constant Improvement, Quality Service, Honest Policy and Honor the Contract". We will make even greater contribution to the development of the cement industry with advanced technology, first class service and good reputation.



沙特阿拉伯Najran水泥有限公司6000t/d熟料生产线
6000 t/d Clinker Production Line at Najran Cement Co., Ltd. Saudi Arabia



皖维高新材料股份有限公司6000t/d熟料生产线
6000 t/d Clinker Production Line at Wanwei High & New Materials Co., Ltd.

设计成果

Design Achievements



沙特阿拉伯北方水泥有限公司6000t/d熟料生产线
6000t/d Clinker Production line at North Cement Co., Ltd. Saudi Arabia



南阳航天水泥厂6000t/d熟料生产线及3000t/d熟料生产线
6000t/d and 3000t/d Clinker Production lines at Nayang Cement Corporation

设计成果

Design Achievements



南方水泥浙江虎山集团有限公司5000 t/d熟料生产线
5000 t/d Clinker Production Line at Hushan Cement Plant of South Cement Group , Zhejiang



湖南益阳东方水泥公司5000 t/d熟料生产线
5000 t/d Clinker Production Line at Dongfang Cement Plant at Yiyang , Zhejiang



陕西众喜水泥公司5000t/d熟料生产线
 Shanxi Zhongxi Cement Corporation
 5000t/d clinker production line



江山虎球水泥有限公司2000t/d熟料生产线
 Jiangshan Huqiu Cement Corporation
 2000t/d clinker production line



郴州东江金磊水泥有限责任公司2500t/d熟料生产线
 Hunan Jinlei Cement Corporation
 2500t/d clinker production line



江西虎山集团鸡山公司2500t/d熟料生产线
 Jiangxi Jishan Cement Corporation
 2500t/d clinker production line

设计成果

Design Achievements



山东青岛年产150万吨水泥粉磨站
1,500,000 tons cement grinding
plant at Qingdao Shandong



香港瑞安集团贵州顶效水泥有限公司1200t/d熟料生产线
Ruian Dingxiao Cement Corporation
1200t/d clinker production line



皖维高新材料股份有限公司
综合利用电石渣干磨干烧1000t/d熟料生产线
Dry grinding and dry burning 1000 t/d clinker production
line with comprehensive use of calcium carbide dregs at
Wanwei High & New Materials Co.,Ltd.



缅甸象王二水泥厂1000t/d熟料生产线
Myanmar Sin Min 02 Cement Factory 1000t/d Production line

设计成果

Design Achievements



大田水泥厂600t/d熟料
国内首条国产化无烟煤煅烧生产线
600 t/d clinker production line at Datian
Cement Plant, the first production line
using anthracite as fuel in China



湖南印山集团2500t/d熟料生产线
Hunan Yinshan Cement Corporation
2500t/d clinker production line



浙江江山水泥股份有限公司2500t/d熟料生产线
Jiangshan Cement Corporation 2500t/d clinker production line

技术改造

Technical Conversion

合肥水泥院具有很强科研开发能力，针对中小水泥企业普遍存在工艺落后、产量低、能耗高、环境污染严重，生产管理落后的现状，我院在热工、粉磨、环保、自动化等领域研究开发了一系列提高产量、节能降耗、改善环保和提高工厂生产自动化和管理水平的新工艺、新技术、新装备，形成了一批深受水泥厂欢迎的实用改造技术。依托这批科技成果，在参与水泥厂技术改造工作时，我院可结合工厂存在的实际问题，有针对性地提出全面的综合技改方案，为水泥厂创造最佳的经济效益和社会效益的同时，明显地改善水泥厂的厂容厂貌，这是我院技术改造工作的特色。

HCRDI has great strength in scientific and technological development. It has developed a series of energy saving technology in the areas of burning, grinding, environment protection, automation and etc. to tackle the current problems of backward technology, low production, high consumption, serious environment pollution, backward production management in small and medium sized cement plants. The introduction of this batches of new process, new technology and new equipment has greatly increased production, reduced consumption and improved environment, raised the management level at cement plants. They are practical in modernizing existing cement plant, so they receive warm welcome from many cement plants. Based on this batch of scientific and technological achievements, the institute is able to make complete and comprehensive solutions taking into consideration of plants' real problems. These solutions will give best economic and social efficiency to the plants. And in the meantime these solutions will improve the appearance of the plants. This is one of the major characteristics of the institute's technological work.



诸暨八方水泥有限责任公司由
600t/d改造成1200t/d熟料生产线
600 t/d converted to 1200 t/d clinker production
line at Zhuji Bafang Cement Company Ltd.



鲁南水泥厂两条2500t/d熟料生产线技改工程
Lunan Cement Plant 2500t/d clinker technical conversion production line

余热发电

Waste Heat Recovery Project

水泥窑余热发电经历了中空窑、补燃、纯余热三个发展阶段，目前在国家节能减排政策支持下，全面进入予分解窑纯余热发电成熟推广阶段。

合肥院长期致力于水泥窑余热发电技术的研发，在低参数单压、双压或闪蒸、中参数过热等领域多有建树。结合除氧系统和抽气系统的不同，根据水泥窑况，因地制宜，为用户量身打造三代技术类型的纯余热发电热力系统，即HCD、HCS和HCG热力系统。

Waste heat recovery plant for cement production line has experienced three development stages characterized by hollow kiln, supplemental combustion, and waste heat. Under the support of state energy-saving and emission-reducing policy, the power generation technology utilizing waste heat from precalciner kiln is fully coming into the "maturity and popularization" phase.

Hefei Cement Research & Design Institute (HCRDI) has always been dedicating to research and development of

cement kiln waste heat recovery technology, with great achievements in low-parameter & single-pressure, double-pressure or flash evaporation, and medium-parameter overheating fields, etc. In consideration of the differences of deaerating systems and pumping systems of different cement plant, and making suitable arrangements according to particular conditions of each cement kiln, HCRDI supplies our clients with three types of waste heat recovery thermal systems, namely HCD, HCS and HCG thermal systems.



湖南印山台水泥有限公司10MW纯余热发电站
10MW WHRS Plant at Hunan Yinshantai Cement Co.,Ltd.





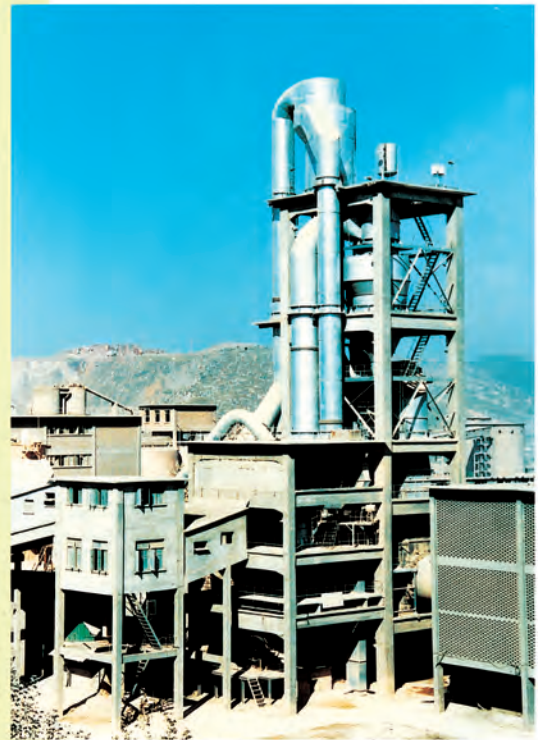
巴基斯坦ATTOCK水泥有限公司3000t/d熟料生产线综合技改工程
 Attock Cement Company 3000t/d
 Clinker Technical Conversion Production Line



巴基斯坦Lucky水泥有限公司2500t/d熟料生产线油改煤技改工程
 Oil to Coal Conversion Project of 2500 t/d Clinker Production
 Line at Lucky Cement Company Pakistan



浙江尖峰集团金马水泥有限公司由
 600t/d改造成1200t/d熟料生产线
 600 t/d Converted to 1200 t/d Clinker Production Line
 at Jianfeng Group Jinma Cement Company Ltd.



海螺集团白马山水泥厂850t/d熟料湿磨干烧生产线
 Baimashan Cement Plant 850t/d Clinker,
 wet Grinding and Dry Burning Production Line

矿山工程



Quarry Engineering

合肥水泥院有一支专业矿山工程设计、科研队伍，主要从事露天矿山工程设计、应用技术研究和技术服务，技术力量雄厚，科研、设计成果丰富。近几年完成了矿山工程设计项目20多项、科研项目11项，其中获部级科技进步一等奖两项，世界华人重大学术成果奖一项，省部级科技进步三等奖三项，多项成果被推广应用，获得很好的经济效益和社会效益，为建材行业的技术进步和发展做出了突出的贡献。

HCRDI has a group of professionals specialized in the design and research of quarry engineering. The focus is on the design of open quarries and related technical research and service. It has a strong team with many research results and rich engineering experience. In recent years, it has completed more than 20 quarry design projects and 11 research projects. 2 of them won the First Prize of Science and Technology Progress at Ministry Level, while 3 of them won the Third Prize of Science and Technology Progress at Ministry Level. One of the results was awarded the Prize of Most Important Achievement of World Chinese. Many results have been applied with sound economic and social benefits, making contributions to technological progress and development of the building materials industry.



工程总承包篇

Turn-key Projects

HCRDI



工程总承包

Turn-key Projects

合肥水泥研究设计院具有对外经济合作经营资格和工程总承包甲级资质，是全球最大的225家国际承包商之一，并建立起了工程总承包项目管理体系，在研发、设计、设备制造、工程施工、调试及售后服务等方面具有独特的优势。目前，我院已经在十几个国家相继承担了日产1000-12000吨熟料生产线等不同规模的工程总承包项目。在已经承担的工程总承包项目中，采用先进的工程项目管理手段来统筹安排我院的资源，既提高了工程建设的管理水平，也很好保证了工程质量和业主的效益。

HCRDI possesses Chinese government issued certificate for international operations and holds Class A Qualification for turn-key projects, one of the biggest 225 international contractors in the world. It has established a turn-key project management system integrated with its strength in research and development, design and engineering, machinery fabrication, construction and erection, commissioning and after-sale services. Up till now, HCRDI has undertaken several turn-key projects overseas in more than 10 countries with capacity varying from 1000 to 12000 tons clinker per day. In implementation of turn-key contracts, HCRDI makes best use of the institute's resources with advanced project management techniques, which not only raises the level of construction management, but also gives good project quality as well as economic efficiency to the employer.



江西万年青水泥股份有限公司3000 t/d 熟料生产线
3000 t/d Clinker Production Line
at Jiangxi Wannianqing Cement Co., Ltd.

工程总承包



Turn-key Projects



俄罗斯LSR集团水泥公司5000t/d熟料生产线
5000t/d Clinker Production line at LSR Corporation Cement Company Russia



沙特阿拉伯Najran水泥有限公司6000t/d及3000t/d熟料生产线
6000t/d and 3000t/d Clinker Production lines at Najran Cement Company Ltd. Saudi Arabia

工程总承包

Turn-key Projects



苏丹阿特巴拉水泥公司5000 t/d熟料生产线
5000 t/d Clinker Production Line at Atbara Cement Company Sudan



苏丹波波水泥公司5000t/d熟料生产线
5000 t/d Clinker Production Line at Ber Ber Cement Company Sudan

工程总承包



Turn-key Projects



越南公清水泥有限公司12000t/d熟料生产线（在建中）
12000t/d Clinker Production Line at Cong Thanh Cement Joint Stock Company Vietnam (in construction)



越南广福水泥有限公司5000t/d熟料生产线
5000t/d Clinker Production Line at Quang Phuc Cement Company Limited Vietnam

工程总承包



Turn-key Projects



越南缘河水泥公司1500t/d+5000t/d熟料生产线
1500t/d+5000 t/d Clinker Production Lines at Duyen Ha Cement Company Vietnam



巴西 MZBA 水泥公司 3000t/d熟料生产线
3000t/d Clinker Production Line at MZBA Cement Plant Brazil

工程总承包



Turn-key Projects



山东新泰中联泰丰水泥有限公司4000t/d熟料生产线
4000t/d Clinker Production Line at CUCC Taifeng Cement Company Limited in Xintai, Shandong



越南春梅水泥有限公司1500t/d熟料生产线
1500t/d Clinker Production Line at Xuan Mai Cement Company Limited Vietnam

工程总承包

Turn-key Projects



巴基斯坦Lucky水泥有限公司2 × 3000t/d熟料生产线
2 × 3000 t/d Clinker Production Lines at Lucky Cement Company Pakistan



巴基斯坦ATTOCK水泥有限公司3000t/d熟料生产线
3000 t/d Clinker Production Line at Attock Cement Company Pakistan

工程总承包

Turn-key Projects



埃塞俄比亚Messebo水泥有限公司3000t/d熟料生产线
3000t/d Clinker Production Line at Messebo Cement Company Limited Ethiopia



沙特阿拉伯NAJLAN水泥粉磨站
NAJLAN Cement Grinding Plant in Saudi Arab



拉法基智利Puerto Montt水泥粉磨站
Lafarge Chile Puerto Montt Cement Grinding Plant

工程总承包



Turn-key Projects



巴基斯坦YUNUS BROTHERS 水泥有限公司2 × 3000t/d熟料生产线
2×3000t/d Clinker Production Lines at YUNUS BROTHERS Cement Company Limited Pakistan



福建漳平振鸿水泥有限公司2500t/d熟料生产线
2500t/d Clinker Production line at Zhenhong Cement Company Limited Zhangping, Fujian

工程总承包

Turn-key Projects



河北鑫普水泥有限公司3000t/d熟料生产线
3000 t/d Clinker Production Line
at Xinpu Cement Company in Hebei



河北天福水泥有限公司3000t/d熟料生产线
3000 t/d Clinker Production Line
at Tianfu Cement Company in Hebei



新疆克州青松水泥有限公司6000t/d熟料生产线
6000t/d Clinker Production Line at Qingsong Cement Co., Ltd. in Kezhou Xinjiang

国际交流篇

International Exchange

HCRDI

工程监理

Construction Supervision

中亚监理工程有限责任公司是合肥水泥院的子公司，具有独立法人地位的国家甲级专业与社会监理企业。是建材行业较早从事监理业务的企业之一。

公司现有国家级注册监理工程师35人，有建设部、安徽省和建材行业认可的上岗资格人员共68人，中、高级职称占80%以上。他们长期从事国内外大中型水泥厂的现场施工管理和工程监理。具有丰富的实际经验，业务素质高，专业齐备。

Zhongya Supervision Company Limited is a subsidiary of HCRDI. It has independent legal person status with Class-A supervision qualification. It is one of the earliest supervision companies in the building materials industry.

The company now has 35 state registered supervision engineers. It has 68 staff members that have recognized qualifications by Ministry of Construction, Anhui Province and building materials industry. More than 80% of the staff members have middle and senior rank professional titles. They have rich experience and high level of competence. They have been long engaged in design, field management and construction supervision of cement plants.



合肥水泥研究设计院工程造价咨询公司是专业从事工程造价咨询业务的具备乙级资质的独立经济核算单位。先后在行业内外承担各种有关项目的投资估算、概算、预算，编制招标投标书、标底和进行招标投标咨询，以及工程造价结算、决算、审计、审核，项目报价、技术经济评价等，累计完成了三百多项工程造价咨询及技术经济评价，取得了业主的好评。多个项目获得省部级优秀奖。

工程造价咨询

Construction Cost Consulting

Construction Cost Consulting Company is an independent cost and profit accounting unit of HCRDI, specialized in construction cost consulting with Class-B business qualification. On the one hand it undertakes investment imputation, budgetary estimates, budgeting, prepares tendering documents and bid evaluations standards and provides consulting on tendering and bidding of various projects. On the other hand, it makes settlements, final accounting, auditing, examination and verification of construction costs, prepares project quotation and techno-economic appraisal. Altogether it has completed jobs for more than 300 construction projects and has received favorable comments from clients. It was rewarded by provincial and ministry governments for many projects.

国际交流

International Exchange

随着我国加入WTO，合肥水泥院对外技术合作与技术交流不断加强，与世界水泥工业同行建立了越来越多的联系，有大批国外专家、学者来院洽谈工程项目与技术合作、参观访问。目前，合肥水泥院已成功地向许多国家提供了不同规模水泥生产线的设计及配套新产品。

With China's entry into WTO, HCRDI has established more and more connections with foreign companies. A great number of foreign experts, scholars and technicians have come to HCRDI, to have technical exchanges, project negotiation or technical discussion. At present, HCRDI has successfully supplied cement production lines and various related products to overseas markets.



我院在越南举办水泥技术推介会
Promotion of HCRDI Cement Technology in the Vietnamese Market

国际交流

International Exchange



越南国家主席视察我院项目现场

The Chairman of Vietnam Visiting the Project Site Constructed by HCRDI

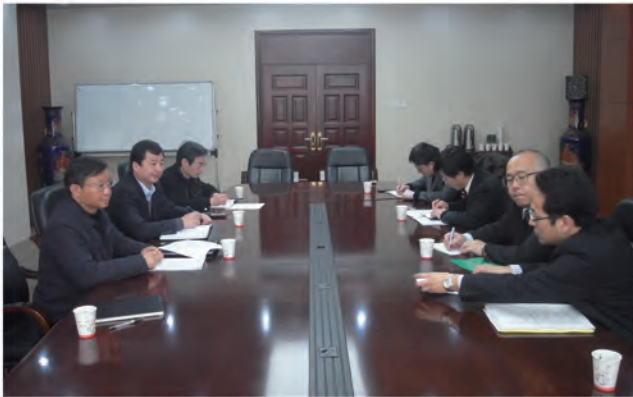


俄罗斯客人参观我院产业园

Russian Guests Visiting Industrial Park of HCRDI

国际交流

International Exchange



日本专家来我院进行技术交流
The Japanese Experts at HCRDI



院领导在越南内地煤炭公司水泥厂现场指导工作
The Institute Team at a Project Site in Vietnam



我院专家赴越南参加技术交流会
HCRDI Experts at Cement Technology Symposium in Vietnam

企业文化篇

Corporate Culture

HCRDI



企业文化

Corporate Culture

企业文化是时代精神和社会文化的重要组成部分。合肥水泥院十分重视企业文化建设，坚持开展精神文明成果评比、企业形象和员工形象塑造以及劳模、先进人物的评选表彰活动，促进了职工职业道德规范的养成和企业群体素质的提高。同时，通过开展丰富多彩的文体活动，陶冶职工情操。合肥水泥院多次被评为安徽省文明单位。

Corporate culture is one of the important components reflecting our contemporary spirit and social culture. HCRDI devotes much attention to corporate culture. Frequent appraisal of spirit civilization examples, promotion of image of enterprise and its employees, and appraisal of pace-setters and advanced persons further enhanced employee's occupational morality and enterprise community quality. HCRDI is proudly entitled as "Anhui Provincial Civilized Unit".



园一角
A Corner of the Institute's Premise



职工体育活动中心
Sports Center



院内技术交流
Internal technical communication



现代化的办公环境
Modern working environment




丰富的文体活动
Various rich recreation activities



春节团拜会
Spring Festival get-together



HCRDI



在坎坷中摸索
在风雨中前行
为了一个执着的信念

Grope in ups and downs,
March in wind and storm,
For a strong belief.

日新月异的合肥水泥院
犹如一颗璀璨的明珠
闪耀在神州大地上

HCRDI changes with each passing day,
Like a resplendent pearl,
Glitter in the Devine land.

今天我们将以

We will create the glory of tomorrow

一流的人才
一流的技术
一流的产品
一流的服务
创造明天的辉煌

With first-class people of extraordinary ability,
With first-class technology;
With first-class products,
With first-class service.